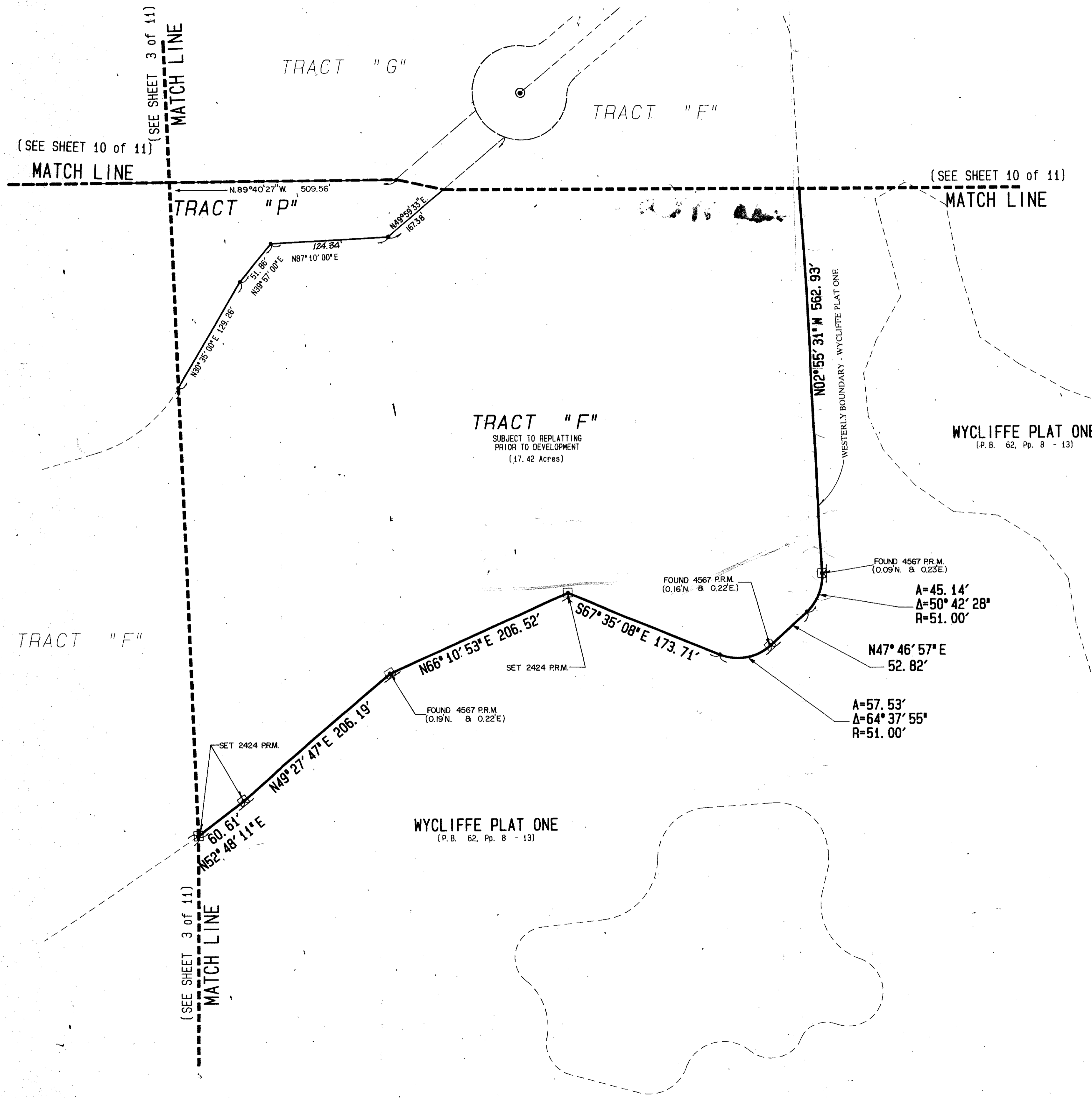
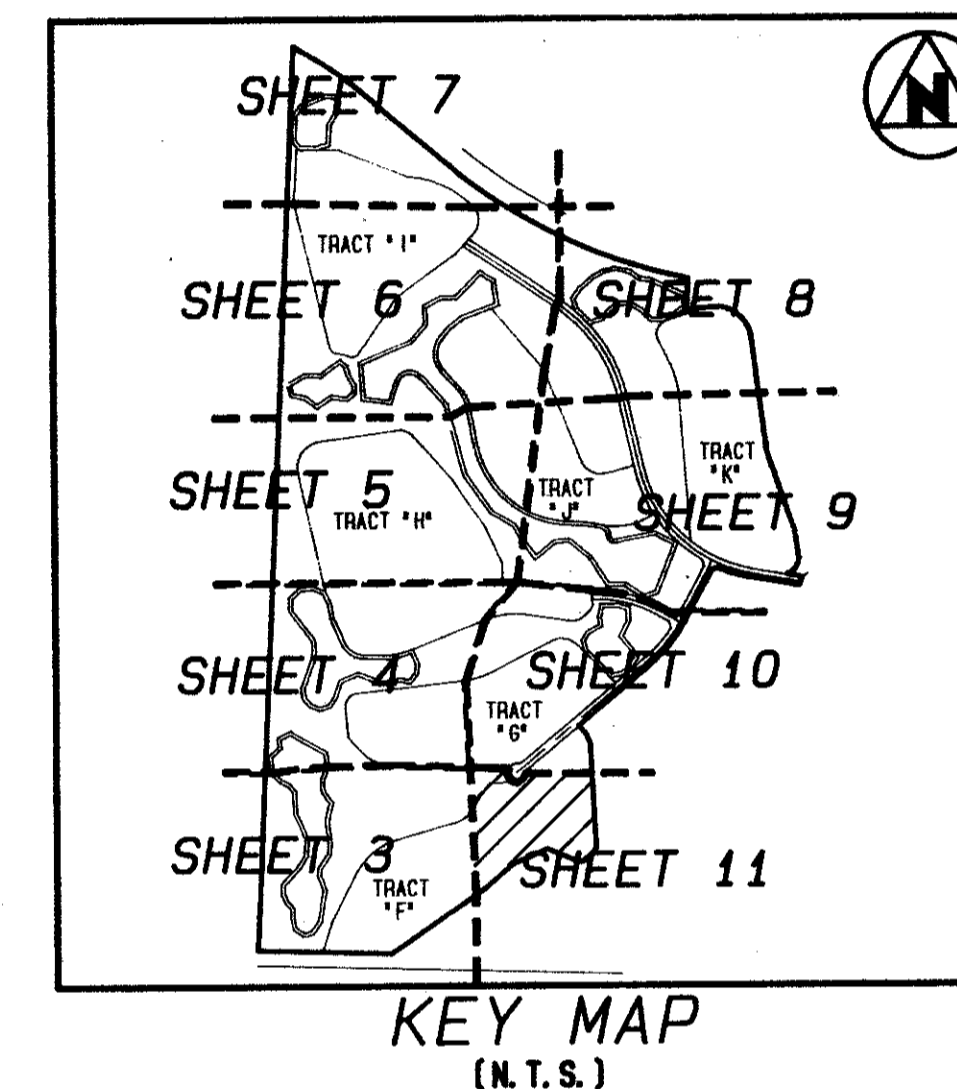
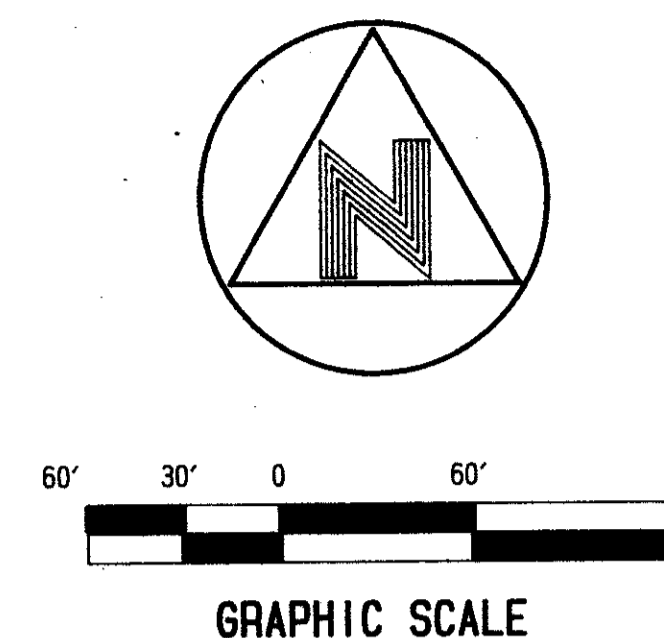


# - Wycliffe Plat Three -

LYING IN SECTION 25, TOWNSHIP 44 SOUTH, RANGE 41 EAST, PALM BEACH COUNTY, FLORIDA

# 144



- LEGEND:**
- A.I.D.E. INDICATES ACME IMPROVEMENT DISTRICT EASEMENT
  - C/L INDICATES CENTERLINE
  - O.R.B. INDICATES OFFICIAL RECORDS BOOK
  - P.C.P. ⊙ INDICATES A PERMANENT CONTROL POINT
  - Pg. INDICATES PAGE
  - Pp. INDICATES PAGE THROUGH PAGE
  - P.R.M. □ INDICATES PERMANENT REFERENCE MONUMENT
  - R/W INDICATES RIGHT OF WAY
  - SEC. INDICATES SECTION
  - MON. INDICATES MONUMENT
  - P.B. INDICATES PLAT BOOK

BOOK 69  
PAGE 144  
FLOOD ZONE B  
QUAD # 63  
SE 86-104  
PUD NAME SOME  
ZONING RTS  
ZIP CODE 33467

T&Z = 7380

0520-009

THIS INSTRUMENT WAS PREPARED BY WILLIAM R. VAN CAMPEN, R.L.S., IN AND FOR THE OFFICES OF BENCH MARK LAND SURVEYING & MAPPING, INC., 4152 WEST BLUE HERON BOULEVARD, SUITE 121, RIVIERA BEACH, FLORIDA

**BENCH MARK**  
LAND SURVEYING & MAPPING, INC.  
RIVIERA BEACH, FLORIDA (407) 848-2102  
WEST PALM BEACH, FLORIDA (407) 793-9234

Record Plat  
**Wycliffe Plat Three**

DRAWN: D.J.M./C.H. CHECKED: K.S. DATE: FEBRUARY 1990  
SCALE: 1" = 60' CADD FILE: W2-A11 M.O. #: P-0600 11 of 11